

MALDIVES LAND AND SURVEY AUTHORITY,

Ameenee Magu, Maafannu, Male', 20392, Maldives.

Office (PABX): +(960) 3004300, Fax: +(960) 3004301

Email: mlsa@housing.gov.mv

Web: www.surveyofmaldives.gov.mv



CONTROL POINT DETAILS		Station Number PSM5235	
Coordinate Information			
Geodetic		Grid	
WGS 84		UTM Zone 43	
Lat: 00° 40' 30.0580" S		E: 299205.8217	
Long: 73° 11' 44.4800" E		N: -74646.8522	
Ellp Height:		Orth Height: +1.527m	

Date: 3rd – 10th June 2012

Monument description & method of survey:

- PSM5235 monument type - Type A.
- The coordinates (E, N) is derived after computation using PSM 5237
- Level was determined using tide data provided by Met.

General site condition & access:

- PSM5235 was to be established in the vegetation line of the island.
- PSM5235 is located on Seenu Villigili on the Staff Area near football ground.
- PSM5235 is located in an area which is easy to access and locate.

Owner: Addu Investments Private Limited



DOWN VIEW



NORTH VIEW



EAST VIEW



TOP VIEW



SOUTH VIEW



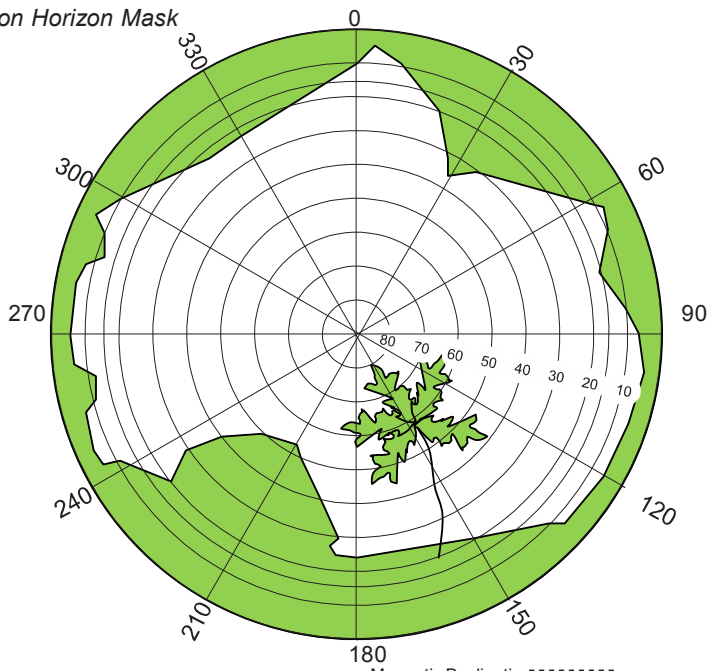
WEST VIEW

SITE INFORMATION

Station Number

P	S	M	5	2	3	5
---	---	---	---	---	---	---

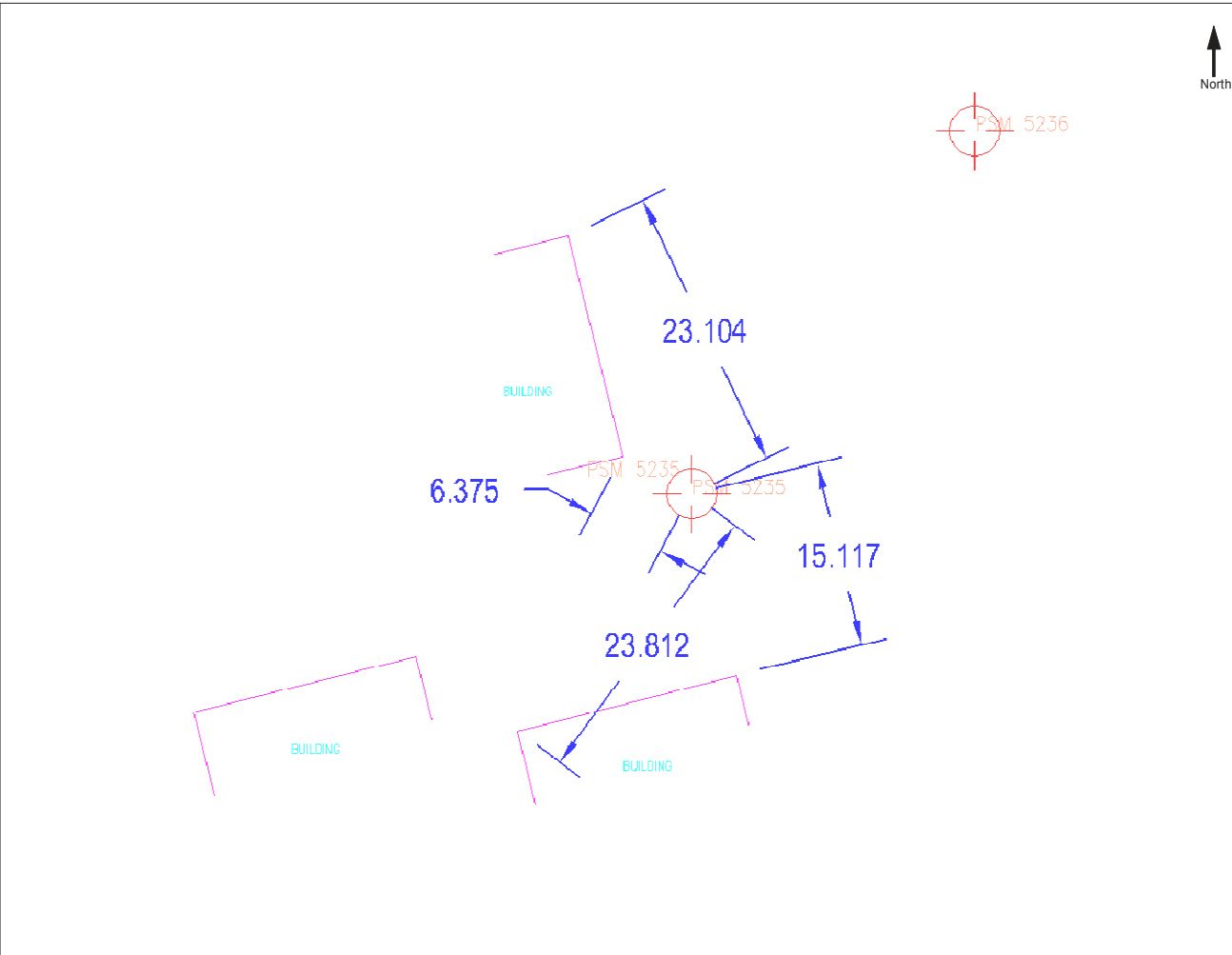
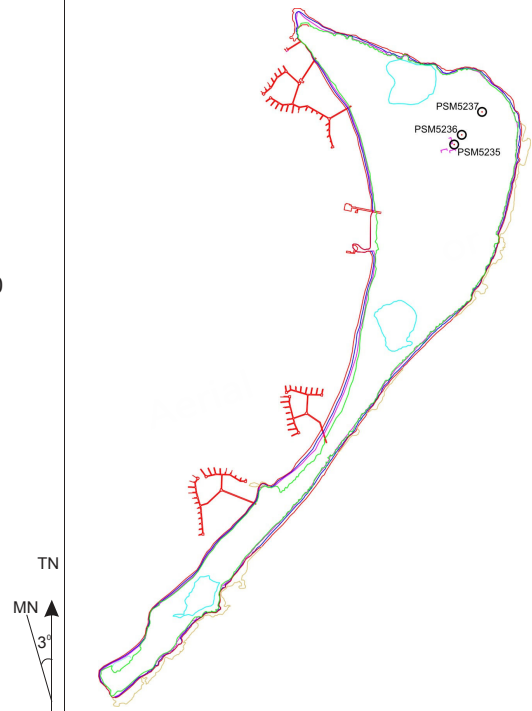
Station Horizon Mask



Height above Marker that horizon was mapped from 1.500 m

Magnetic Declination
Declination applied to this figure?
 Yes No

Locality



Sketched by: Hazim Rasheed (Hardy)

Scale: Not to scale

Date: 26th June 2012

MALDIVES LAND AND SURVEY AUTHORITY,

Ameenee Magu, Maafannu, Male', 20392, Maldives.

Office (PABX): +(960) 3004300, Fax: +(960) 3004301

Email: mlsa@housing.gov.mv

Web: www.surveyofmaldives.gov.mv



CONTROL POINT DETAILS		Station Number PSM5236
Coordinate Information		
Geodetic	Grid	
WGS 84	UTM Zone 43	
Lat: 00° 40' 29.1040" S	E: 299228.7563	
Long: 73° 11' 45.2220" E	N: -74617.4989	
Ellp Height:	Orth Height: +1.408	

Date: 3rd – 10th June 2012

Monument description & method of survey:

- PSM5236 monument type - Type A.
- The coordinates (E, N) is derived after computation using PSM 5237
- Level was determined using tide data provided by Met.

General site condition & access:

- PSM5236 was to be established in the vegetation line of the island.
- PSM5236 is located on Seenu Villigili on the Staff Area near football ground.
- PSM5236 is located in an area which is easy to access and locate.

Owner: Addu Investments Private Limited



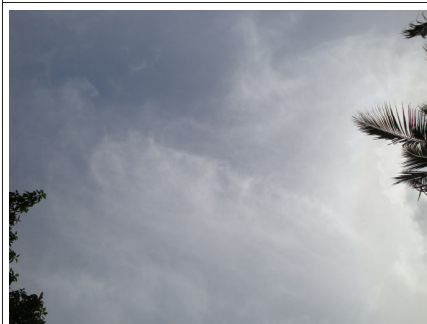
DOWN VIEW



NORTH VIEW



EAST VIEW



TOP VIEW



SOUTH VIEW



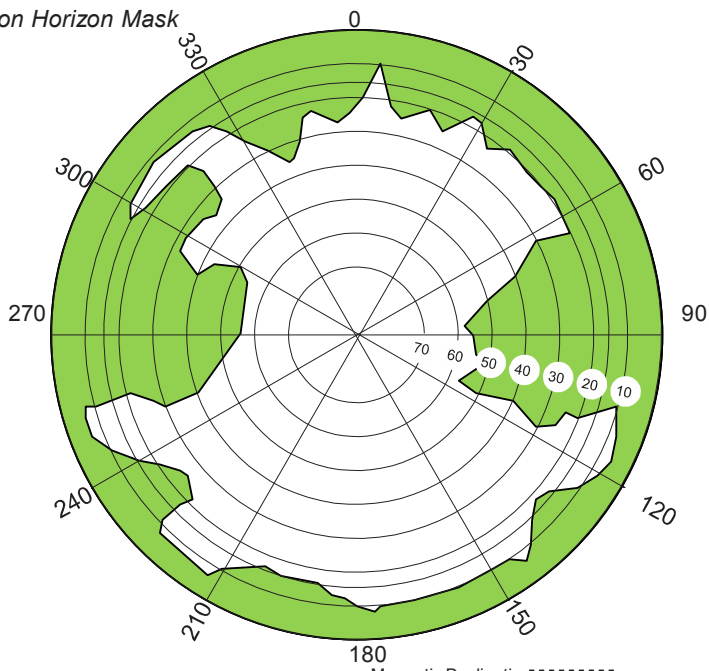
WEST VIEW

SITE INFORMATION

Station Number

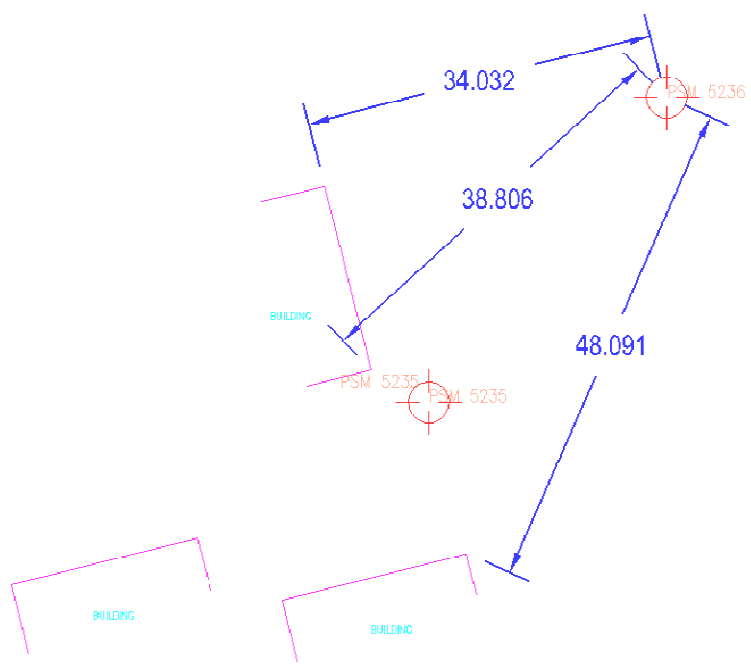
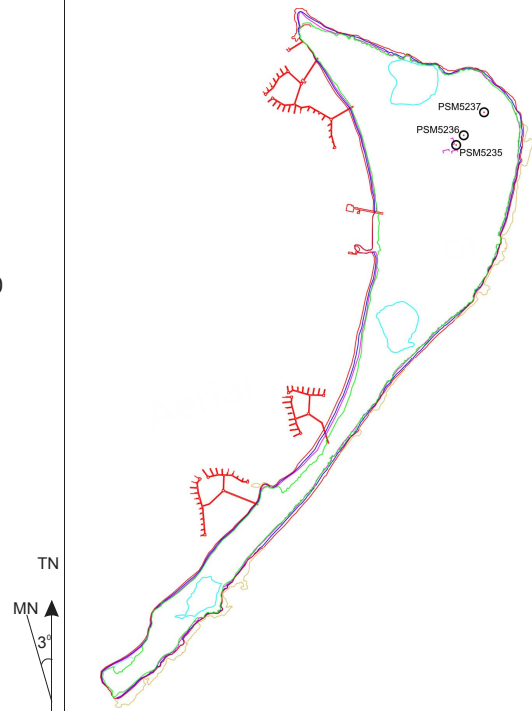
P	S	M	5	2	3	6
---	---	---	---	---	---	---

Station Horizon Mask



Height above Marker that horizon was mapped from 1.500 m

Locality



MALDIVES LAND AND SURVEY AUTHORITY,

Ameenee Magu, Maafannu, Male', 20392, Maldives.

Office (PABX): +(960) 3004300, Fax: +(960) 3004301

Email: mlsa@housing.gov.mv

Web: www.surveyofmaldives.gov.mv



CONTROL POINT DETAILS		Station Number PSM5237
Coordinate Information		
Geodetic		Grid
WGS 84		UTM Zone 43
Lat: 00° 40' 26.8280" S	E: 299290.6700	
Long: 73° 11' 47.2270" E	N: -74547.6500	
Ellp Height:	Orth Height: +3.111	

Date: 3rd – 10th June 2012

Monument description & method of survey:

- PSM5237 monument type - Type A.
- The coordinates (E, N) is Geo referenced using *Trimble GeoExplorer (Geo XH - 2008 Series)*
- Level was determined using tide data provided by Met.

General site condition & access:

- PSM5237 was to be established in the vegetation line of the island.
- PSM5237 is located on Seenu Villigili on the Spa Area.
- PSM5237 is located in an area which is easy to access and locate.

Owner: *Addu Investments Private Limited*



DOWN VIEW



NORTH VIEW



EAST VIEW



TOP VIEW



SOUTH VIEW



WEST VIEW

SITE INFORMATION

Station Number

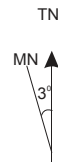
P S M 5 2 3 7

Station Horizon Mask

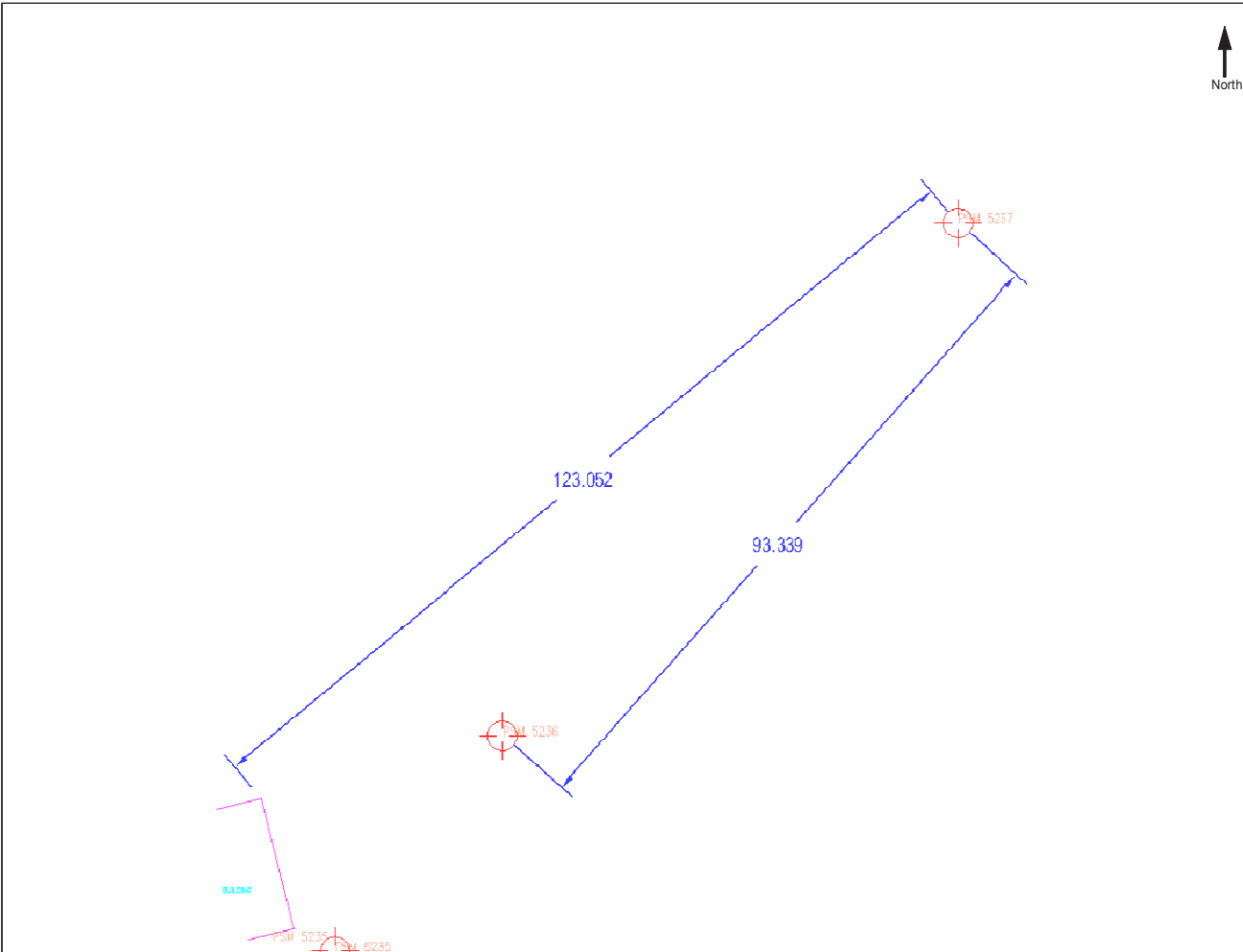
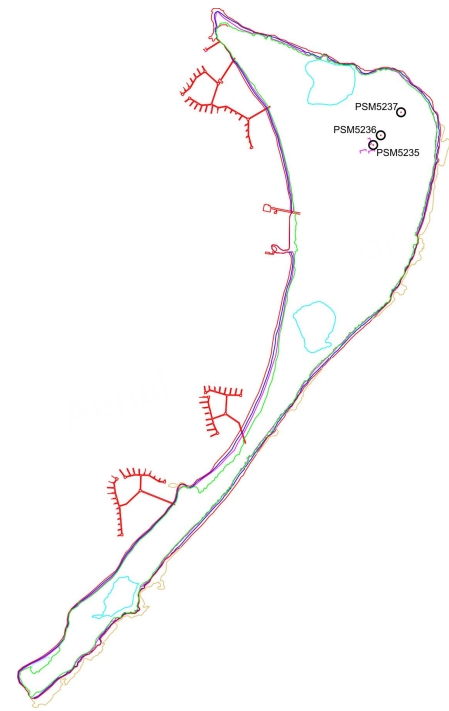


Height above Marker that horizon was mapped from 1.500 m

Magnetic Declination -----
 Declination applied to this figure?
 Yes No



Locality



Sketched by: Hazim Rasheed (Hardy)

Scale: Not to scale

Date: 26th June 2012